

TMGA Products

DVR

❑ Dash Cam 5.1 – Basic Range

DASHCAM BP 5.1 WIFI



BP 5.1 WIFI

4K & 1080P | Front & Rear

Part No. 885732003536

Digital Video Recorder (Dashcam) for Car



G-Sensor



Built-in WiFi



Mobile APP
(iOS & Android)



Voice Prompt



- Mini Bullet Dash Cam
- Ultra 4K Front Camera
- Full HD 1080P Rear Camera
- 170° Wide-View-Angle (diagonal)
- Built-in WiFi for Live View
- Mobile APP for iOS & Android
- Built-in Voice Prompt
- Supports Gravity Sensor
- Supports Car Number Display
- Built-in Microphone & Speaker
- Supports Time & Date Stamp (ON/OFF)
- Supports Rear Camera Mirror Function (ON/OFF)
- Smaller Video Size with H.265 Coding Format
- Storage Media **Ultra High Speed 3 Micro SD up to 256GB**
- Working Temperature: -20° C -70° C
- Dimension (WXHXD): 91x36x34mm
- Weight: 59g
- 2 year Warranty

S.No	Part No.	Description	Applicability
1	885732003536	BP 5.1 - Dash Cam	All EV & PV Models

❑ DVR – 3Way- Mid Range



DashCam 4k Video Recorder 3 WAY UNIVERSAL

FEATURES



1. Power Button
2. Down Selection
3. Menu/Mode Button
4. Up Selection
5. Work/ Charging indication
6. Reset Button
7. TF card slot
8. Inner camera
9. Front Camera
10. Infrared light
11. Rear pull interface
12. Type C power Interface
13. Display
- 15 MIC



Scan for Installation Video



Scan for Product Features Video



Scan for User Manual

Features:-

- 3 way seamless and continuous recording.
- Front camera, Inner cabin camera & reverse camera.
- GPS Tracking.
- G-sensor collision sensing lock function.
- 2 inch high-definition display screen.
- 4K+1K+1K high-definition wide-angle camera.

Advantages:-

- Video format : MP4
- Built-in microphone and speaker.
- Support for recording while charging.
- Support for high-capacity TF(micro SD) memory card upto 128GB.
- Support for Wi-Fi function, time-lapse recording function.
- Support for overvoltage protection function when car starts.

Benefits:-

- Easy installation with Plug in fit .
- 2 Years of product warranty.

S.No	Part No.	Description	Applicability
1	885732003644	DVR -3Way	All PV & EV Models

❑ DVR – Advanced



Industry First Features: ALL IN ONE A.I. DASH CAMERA

- Advanced Driver Assistance System (ADAS LVL1) with Road safety alerts such as Lane Departure, Forward Collision Warning, Pedestrian Warning
- Driver Monitoring System (DMS) with A.I Pre-emptive accident preventions with warnings such Distracted Driving, Fatigue Driving, Talking on the phone while driving, Smoking while driving.
- LIVE GPS Tracking with Speed, Route takes, path, Distance covered, Replay, ODOmeter setup, Alerts & notification
- Live (Remote) video streaming of both front & inside camera via APP. Ability to perform TWO way Communication using the APP & the Dash camera. Record directly to Mobile phone and save Geo Tagged Images.

Introduction:-

Welcome to the next generation of driving safety an convenience with our TATA AI-Based 4G Dash Camera. Designed to enhance your driving experience, this device is equipped with advanced technology to ensure your safety, monitor driving habits, and provide seamless connectivity on the go.

Features:-

- 4G Enabled Dual Dash Camera with built in GPS
- A.I. Based Software completely Designed, Built & Managed in India with Data Protection & Qu resolution
- Camera: Dual Cameras (Front and Cabin) Front Camera 1080P with ADAS & Cabin Camera 720p with DMS and IR for Low Light Vision
- Connectivity: 4G LTE, Built-in GPS for Real Time Tracking
- Pre-empting Road Accidents with AI based DMS {Driver Monitoring System}, ADAS {Advanced Drive Assistance Systems} Level 1 with AI
- Built-in 'G' Sensor for emergency recording
- Supports upto 512GB SD card (Class 10)
- SOS Button for Emergency
- Prepaid SIM Pack: 3 Months from Activation (10GB 4G Data pack monthly) –Post 3 month you have to buy it. (More information check user manual)

Advantages:-

- Enhanced Safety: Proactive monitoring and real-time alerts help prevent accidents by notifying drivers of potential dangers like lane departure and forward collisions. This ensures safer driving habits an reduces the risk of accidents.
- Connectivity: Share your journey in real-time with loved ones through live streaming and location tracking. Stay connected without additional devices, enhancing your travel experience
- Comprehensive Monitoring: Track your vehicle's location and access detailed reports on stops, trips and daily summaries. Geofencing and real-time alerts keep you informed of your vehicle' movements.
- User-Friendly Application: Manage all dash camera features seamlessly through an intuitive Made India mobile APP. Easily access live streams, reports, and alerts with just a few taps.
- Data Security: All data is securely hosted and managed in India, ensuring privacy and quick query resolution. Your information is protected with the highest security stand.

Benefits:-

- Family & friends can track, view live, and talk to their kids in real time without mobile device use
- Travel Vlogging: Document journey for fans in real-time
- Late-Night Travel Safety: Share journey with family for peace of mind.
- 2 Years of product warranty.



Application Guide

S.No	Part No.	Description	Applicability
1	885732003596	Digital Video Recorder Advanced	All PV & EV Models

For App Download



IOS ONE Android



User Manual



Installation Video



What is this Dash Camera?

(Hardware)

- 1 ADAS (Advanced Driver Assistance Systems) Level 1 with AI
- 2 DMS (Driver Monitoring Systems)
- 3 2 Channel Camera (External Road view & Internal Cabin View)
- 4 Built-in Speaker & Microphone
- 5 Built-in 4G SIM Slot for Enabling Live Streaming
- 6 Built-in GPS for Real time tracking
- 7 Port for SOS expansion



Journey/Memories Feature

How it works?

Once you start the journey, the map page will open and create a route on the map in real time. You can name your journey and also upload pictures using your dash cam - internal & external camera sat various places that may catch your interest - Example, Beautiful waterfall near Kemptly! Must try the Parathas at this new Dhaba opened in Ambala!

You can share your live journey with fellow riders so that they can track each other in real time.

You can also share a saved journey with friends and families so that they know what route you took and what all sights are worth looking out for!

The receiver do not need to have the application installed and can view from the web browser itself!

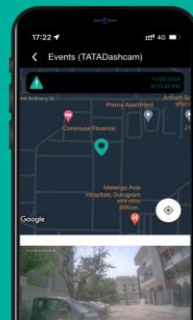
Live Stream Of All Cameras

The user can access the live video & audio feed of the vehicle interior cabin & the view of the road ahead, and can also hear conversations inside the vehicle. We also provide an option to record the ongoing video feed directly to your mobile phone by a single click of a button - this can then be shared via messenger apps and email.



Capture Photo

The user can capture & save static images of all cameras in real time with the location where the vehicle is. This gets uploaded on the cloud server. They can be downloaded and shared via messaging apps.



Capture Videos

Similar to Photo capture - video clips of 10 seconds of all cameras can be captured remotely while using the APP. The same can be shared.



Industry First Features - Scene 1

Social connectivity like never seen before

Imagine if the grandparent can not only track the location of their kids but also in real time also talk to the entire family while watching them live through the camera. All this without the family in the car having to touch their mobile devices while driving!



Grandparents can view their kids



Industry First Features

Social connectivity like never seen before

Start Sharing Your Journey

Location is Mapped

Drop a Marker

View the whole Route

Scene 2

A travel vlogger documents his entire journey with the help of Tata.ev app for his fans so that they know exactly what to expect when they get out on the same trip!

Industry First Features - Scene 3

Social connectivity like never seen before

Due to workload, Neha leaves her office at 11:30 PM & is extremely worried to drive home alone at this hour. Sharing her limited time link to Tata.ev app, she calls her father to ensure if he can see her. She reaches safely & the link expires after set time.



Live Streaming Feature

Benefits

Remote live streaming features in a car dash camera offer several benefits:

- Real-Time Monitoring**: Users can monitor their vehicle remotely, providing peace of mind about its safety and security, especially in parking lots or unfamiliar locations.
- Emergency Response**: In case of accidents or emergencies, live streaming enables immediate assessment of situation, allowing for quicker response from emergency services, friends or family.
- Evidence Collection**: Live streaming provides a real-time evidence in the case of accidents, theft, or vandalism, facilitating insurance claims and legal proceedings.
- Lane Change**: The AI detects Lanes via the lane lines painted on the road and alerts driver of frequent lane changes via voice prompt.
- Forward Collision Warning**: The AI monitors the relative distance to the front vehicle and if the speed at which the current vehicle is travelling makes it a risk of colliding with the front vehicle an alarm is generated in the dash camera.
- Vehicle Tracking**: Allows users to track their vehicle's location in real-time, enhancing security and enabling efficient fleet management for businesses.
- Remote Assistance**: Users can remotely assist others in their vehicles, such as family members or employees, by providing guidance or support during their journey.
- Peace Of Mind**: It offers peace of mind to drivers & vehicle owners by providing constant access to their vehicle's surroundings and activities, even when they are not physically present.
- Pedestrian Collision Warning**: The front camera AI detects pedestrians and monitors their distance. If there's a risk of collision due to the vehicle's speed, a voice alarm alerts the driver via the dash camera.
- Too Close**: If a vehicle has stopped in front of the current vehicle & the current vehicle continues to not forward towards the stopped vehicle, a voice alarm is generated.

Advanced Driving Assistance Systems-LVL1

Usage & Benefits

Level 1 Built-in AI based ADAS system has the following functionality



Enhanced Safety | Accident Prevention | Improved Awareness

Setup & Activation

3 Month Free Trial

Please note this DVR comes with a **Free 3 month trial of a 4G Data SIM card and Mobile APP support.** To activate the SIM card kindly contact for activation: +91-8130863876; 9667227027; 8448560013

Mandatory Details For Activation

Device ID/IMEI number (printed on device)
SIM IMSI Number (3D Digit - Located on SIM card)
Vehicle's Registration Certification;
Vehicle Owners Photo ID Proof with Address proof;
Vehicle Owners Contact Number & Email ID.
WhatsApp to - +91-8130863876; 9999458588; 9667227027

Post 3 Months SIM & Support Plan

9 month Recharge: INR 2,250/- plus 18% Tax
12 Month Recharge: INR 2,750/- plus 18% Tax

How to Recharge

Call: +91-8130863876; 9999458588
Email: service@mosfettech.com; info@mosfettech.com
Timings: 9am till 9pm; 7 days a week

ADVANCED DVR SUPPORT & RECHARGE

Overall, remote live streaming capabilities in a car dash camera enhance safety, security, and peace of mind for vehicle owners and businesses alike.

Comparison of Features

S.no	DVR	Features								
		Front Camera	Cabin Camera	Rear Camera	Camera Resolution (4K)	G Sensor	GPS Tracking	Loop Recording	ADAS L1	Live Video Streaming
1	DVR - Advance	√	√	X	X	√	√	√	√	√
2	DVR- 3 Way	√	√	√	√	√	√	√	X	X
3	DVR- 5.1	√	√	X	√	√	X	√	X	X

THANK YOU