

TMGA Products

HARRIER. EV

Broad Category	Secondary Category	Primary Category	Part No.	Material Description	Applicability (Variant)
Style	Bright Chrome	Chrome Door Handle	885795101505	Door Handle Garnish Chrome	All Variant
		Chrome Tail Gate Lower	885795101502	Dicky Garnish Lower - Chrome	All Variant
		Chrome Body Side Molding	885732002925	BSM With Chrome	All Variant
		Chrome Window Frame Kit	885795101513	Window Frame Kit - Chrome	All Variant
		Chrome Door Edge Guard	885732002743	Door Edge Guard With Chrome	All Variant
		Chrome Rear Bumper	885795101510	Rear Bumper Garnish - Chrome	All Variant
		Chrome Humanity Line	885732003692	Chrome Humanity Line	All Variant
		Chrome Head Lamp & Reflector	885732003694	Chrome Headlamp & Reflector Garnish	All Variant
		Head Lamp Mascot	885732003867	Head Lamp Mascot- Chrome	All Variant
		Chrome Front Bumper	885732003697	Front Bumper Garnish Chrome	All Variant
	Black Chrome	Chrome Humanity Line	885732003691	Humanity Line Black chrome	All Variant
		Chrome Head Lamp & Reflector	885732003693	Headlamp & Reflector Garnish Black chrome	All Variant
		Chrome Rear Bumper	885732003696	Rear Bumper Garnish Black chrome	All Variant
	Labels	Mascot	885732003709	Mascot Bonnet Black chrome	All Variant
		Mascot	885732003552	Mascot Bonnet chrome	All Variant
	Moulding	Dash Mat	885795101516	Dash Mat	All Variant
		Rear Bumper	885732003181	Rear Bumper Garnish Piano Black	All Variant
	Door Visor	Door Visor wd Chrome	885795101514	Door Visor - Chrome Lining	All Variant
	Scuff Plates	Scuff Plates SS	885732003698	Scuff Plate-Non Illuminated	All Variant
	Electricals	Puddle Lamp	885732003866	Puddle Lamp T Logo	All Variant
Puddle Lamp		885732003645	Puddle Lamp T Logo wireless	All Variant	

July_25

Chrome Garnish



Door Handle Garnish



Dickey Garnish Lower



Scan for Installation Video



Body Side Molding



Scan for Installation Video



Window Frame Kit



Scan for Installation Video



Front Bumper



Door Edge Guard

Features:-

- Made up of High quality material (ABS)
- Designed as per the vehicle contour & style.

Advantages:-

- Classy & stylish chrome garnish enhance the look of the car.
- Light weight & long lasting product.
- Perfectly fit & specially designed.

Benefits:-

- Installation with 3M DSA tape.
- Tested & reliable product.
- 2 Years of product warranty.

S.No	Part No.	Description	Applicability
1	885795101505	Door Handle Garnish Chrome	All Variant
2	885732002925	BSM With Chrome	All Variant
3	885795101502	Dicky Garnish Lower - Chrome	All Variant
4	885795101513	Window Frame Kit - Chrome	All Variant
5	885732003697	Front Bumper Garnish- Chrome	All Variant
6	885732002743	Door Edge Guard With Chrome	All Variant

❑ Chrome Garnish



Head Lamp + Reflector Garnish (Chrome)



[Scan for Installation Video](#)



Humanity Line (Chrome)



[Scan for Installation Video](#)



Rear Bumper Garnish (Chrome)



[Scan for Installation Video](#)

Features:-

- Made up of High quality material (ABS)
- Designed as per the vehicle contour & style.

Advantages:-

- Classy & stylish chrome garnish enhance the look of the car.
- Light weight & long lasting product.
- Perfectly fit & specially designed.

Benefits:-

- Installation with 3M DSA tape.
- Tested & reliable product.
- 2 Years of product warranty.

S.No	Part No.	Description	Applicability
1	885732003694	Chrome Headlamp & Reflector Garnish	All Variant
2	885732003692	Chrome Humanity Line	All Variant
3	885795101510	Chrome Rear Bumper Garnish Chrome	All Variant

* Images for reference purpose only.

© Copyright, Confidential, Tata Motors Limited

July 25

❑ Chrome Garnish– Black



Head Lamp + Reflector Garnish (Black Chrome)

Humanity Line (Black Chrome)

Rear Bumper Garnish (Black Chrome)



[Scan for Installation Video](#)



[Scan for Installation Video](#)



[Scan for Installation Video](#)

Features:-

- Made up of High quality material (ABS)
- Designed as per the vehicle contour & style.

Advantages:-

- Classy & stylish chrome garnish enhance the look of the car.
- Light weight & long lasting product.
- Perfectly fit & specially designed.

Benefits:-

- Installation with 3M DSA tape.
- Tested & reliable product.
- 2 Years of product warranty.

S.No	Part No.	Description	Applicability
1	885732003693	Chrome Headlamp & Reflector Garnish Black	All Variant
2	885732003691	Chrome Humanity Line Black	All Variant
3	885732003696	Chrome Rear Bumper Garnish Black	All Variant

July_25

❑ Mascot



Bonnet Mascot (Chrome)



Bonnet Mascot (Black Chrome)



Headlamp Mascot (Chrome)

Features:-

- Made up of High quality material (ABS)
- Designed as per the vehicle contour & style.

Advantages:-

- Classy & stylish chrome mascots enhance the look of the car.
- Perfectly fit & specially designed for Curvv.

Benefits:-

- Installation with 3M DSA tape.
- Tested & reliable product.
- 2 Years of product warranty.

S.No	Part No.	Description	Applicability
1	885732003552	Mascot Harrier Chrome	All Variant
2	885732003709	Mascot Harrier Black Chrome	All Variant
3	885732003867	Head Lamp Mascot- Chrome	All Variant

July_25



[Scan for Installation Video](#)

Features:-

- Made up of High quality material (Polycarbonate)
- Aerodynamically designed as per the vehicle contour & style.

Advantages:-

- Classy & stylish door visor chrome insert enhance the look of the car.
- Rain Protection- Door visors allow you to keep the window slightly open during rainy conditions without getting water inside, making it easier to let fresh air in.
- Perfectly fit & specially designed for Harrier.

Benefits:-

- Installation with 3M DSA tape.
- Tested & reliable product.
- 2 Years of product warranty.

S.No	Part No.	Description	Applicability
1	885795101514	Door Visor -Harrier Chrome Lining	All Variant

July_25

❑ SS Scuff Plate



SS Scuff Plate FR (Black Finish)



SS Scuff Plate RR (Black Finish)



Scan for Installation Video

Features:-

- Scuff plate with Omega Arc & Harrier branding.
- Give style & protection from scratch to the sill area.

Advantages:-

- High quality SS material with sandblasting finish.
- Sporty Rich Design Adding to Aesthetic Appeal.
- Perfectly fit & specially designed.

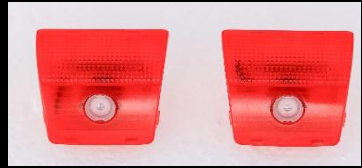
Benefits:-

- Installation with 3M DSA tape.
- Testing & reliable product.
- 2 Years of product warranty.

S.No	Part No.	Description	Applicability
1	885732003698	Scuff Plate	All Variant

July_25

❑ Puddle Lamp



[# Puddle Lamp T Logo](#)

[Scan for Installation Video](#)



[# Puddle Lamp Tata Wireless](#)



[Scan for Installation Video](#)



[# Logo Projector Lamp .ev](#)

Features:-

- Logo projector lamp..
- Logo Projection when door is opened & turn off when closed.

Advantages:-

- Gives Aesthetic effect and also provide lighting when you comes out from car in dark.
- Perfectly fit without any drilling and external distortion in door trim.

Benefits:-

- 2 Years of product warranty.

S.No	Part No.	Description	Applicability
1	885732003866	Puddle Lamp T Logo	All Variant
2	885732003645	Logo Projector Lamp	All Variant
3	885732003600	Logo Projector Lamp .ev	All Variant

July_25

Broad Category	Secondary Category	Primary Category	Part No.	Material Description	Applicability (Variant)
Comfort	Cushion	Neck rest	885732003211	Neck Rest With seat Belt- Memory foam	All Variant
		Head rest cushion	885732003856	Head rest cushion	All Variant
	Sunshades	Sunshade Magnetic	885732002927	Magnetic Sunshade - Front & Rear	All Variant
		Umbrella Front Windscreen	885732003805	Sun Shade Umbrella Windscreen	All Variant
	Common Products	Seat Massager	885732003594	Ventilated Seat + Massager	All Variant
		Heated Blanket	885732003593	Heated Blanket	All Variant
		Swivel Seat	885732003398	Swivel Seat	All Variant
		Humidifier	885732003062	Car Humidifier	All Variant

❑ Neck Rest & Back Rest



Neck Rest With Belt



Head Rest Cushion

Features:-

- Give Comforts During Long Ride.
- Memory Foam Material.

Advantage:-

- Makes Your Ride Soothing & Enjoyable
- Reduce Strain & Give Relaxation.

Benefits:-

- 2 Year warranty.

S.No	Part	Material Description	Applicability
1	885732003211	Neck Rest With seat Belt- Memory foam	All Variant
2	885732003856	Head rest cushion	All Variant



Features:-

- Block sunlight, reflect UV rays & prevent car from heating up.
- High quality material to protect from UV rays.

Advantages:-

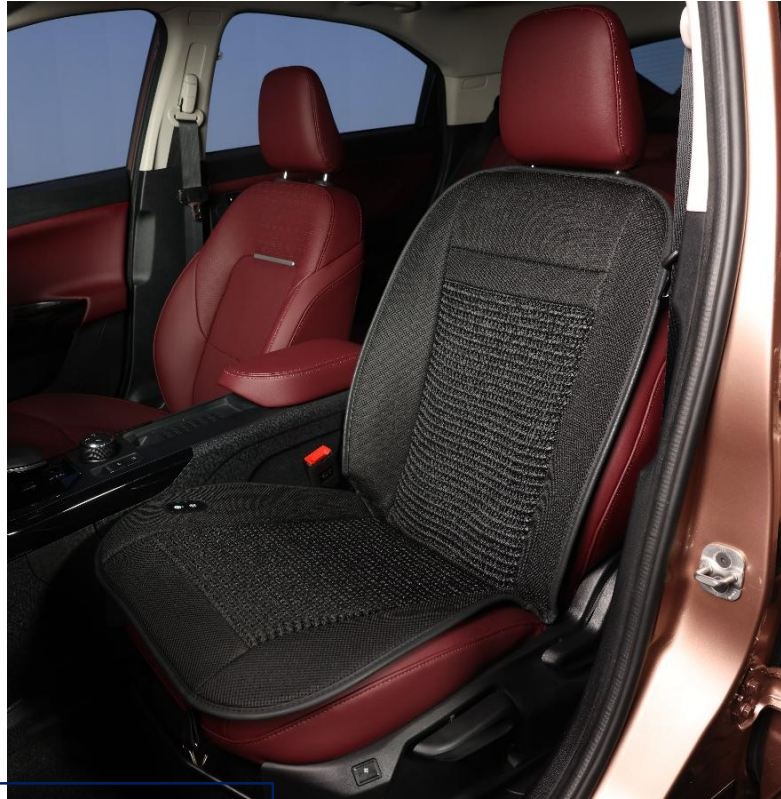
- Helps in reducing interior temperature
- Assists in faster AC cooling and thereby improving fuel efficiency

Benefits:-

- Easy to Install and remove.
- 2 Years of product warranty.

S.No	Part No.	Description	Applicability
1	885732002927	Magnetic Sunshade-Harrier	Adventure ,Fearless, empowered

❑ Ventilated Seat Massager



[Scan for Installation Video](#)

Features:-

- Ventilated cooling seat with massager.
- Inbuilt Fan on seat

Advantages:-

- Button operated function for cooling & massager.
- Perfect for long periods of driving.
- Operates at 12V power input

Benefits:-

- Easy to Install and remove
- 2 Years of product warranty.

S.No	Part No.	Description	Applicability
1	885732003594	Seat Massager	All Variant

July_25

❑ Heated Blanket



Scan for Installation Video

Features:-

- 12v car heating blanket.
- Material : flannel + heater sheet +Cotton wool

Advantages:-

- Power: 12V, 3.6A, 43W
- Size: 150 X 110 cm (±5cm)
- Provide Instant warmth and comfort when temperatures drop.

Benefits:-

- Easy to plug & remove
- 2 Years of product warranty.

S.No	Part No.	Description	Applicability
1	885732003593	Heated Blanket	All Variant

July_25



Features:-

- Maintain optimal humidity level in car.
- Provide cool mist & odor free environment

Advantages:-

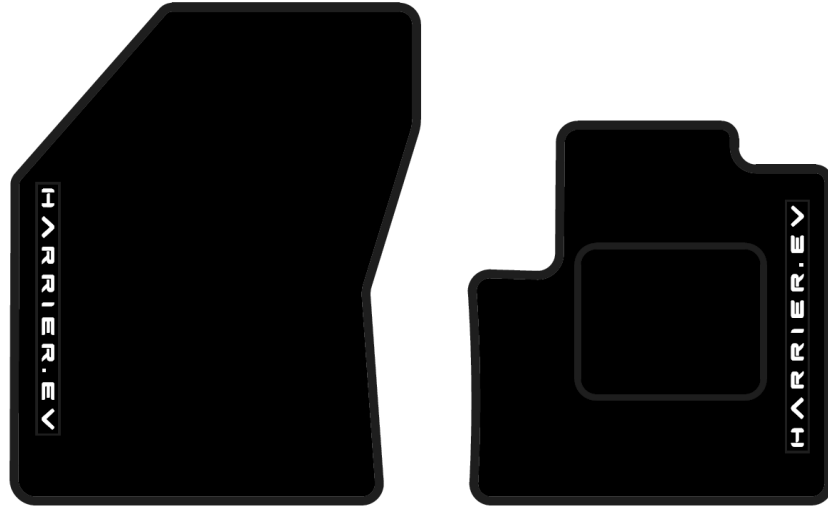
- Small area or cup holder is required to place in the car .
- Product capable enough to easy coverage of the Tata Cars

Benefits:-

- Dust free and odor free environment.
- 2 Years of product warranty.

S.No	Part	Material Description	Applicability
1	885732003062	Car Humidifiers	All Variant

Broad Category	Secondary Category	Primary Category	Part No.	Material Description	Applicability (Variant)
Utility	Floor Mats	Floor Carpet Mat	885732003868	Floor Carpet Cabin + Trunk Mat	All Variant
		Floor 7D Mat	885732003864	7D cabin + Trunk Mat	All Variant
		Floor 3D Mat	885732003829	3D Cabin + Trunk Mat	All Variant
	Mud Flaps	Mud Flaps	885732003436	Mud Flaps	All Variant
	Screen Guard	Screen Guard Other	885732003451	Screen Guard Touch Panel/FATC	All Variant
		Screen Guard Other	885732003449	Screen Guard Instrument Cluster 9 inch	All Variant
		Screen Guard Other	885732003448	Screen Guard Music system 10 inch	Adventure
		Screen Guard Other	885732003453	Screen Guard Music system 12.2 inch	Adventure S,Adv S+A, Fearless, Dark
		Screen Guard Other	885732003858	Screen Guard Music System14.5 inch	Empowered
		Screen Guard Other	885732003446	Screen Guard Steering Wheel	All Variant
	Common Products	Number Plate Garnish	885709101608	Number Plate Regular 2Pcs	All Variant
		Car Bin	885732002797	Car Bin Plastic	All Variant
		Charger	885732003591	Charger 160 Watt	All Variant
		Charger	885732003604	Charger Retractable Cable 120 watt	All Variant
		Mobile Charger	885773201528	Car Wireless Charger Suction Cup & AC Vent	All Variant
		Dashboard storage Tray	885732003804	Dashboard storage Tray	Adventure S,Adv S+A, Fearless, Dark
		Refrigerator	885732003809	Refrigerator 25 L	All Variant
		Wrench	885732003774	Scissors jack wrench	All Variant
	Lifestyle	Flask	885732003189	VaccumFlask Black 750ML	All Variant
		Coffee maker	885732003590	Coffee Maker wireless	All Variant
		Power Station	885732003810	Power Station 90Ah	All Variant
		Portable Washer	885732003801	Portable Washer wireless	All Variant
		Coat Hanger	885704283361	Coat Hanger	All Variant



Carpet Cabin Mat



Carpet Trunk Mat

Features:-

- Premium carpet mat which add comforts & style to your car.
- Perfect fit the floor .
- Harrier branding enhance the product look.

Advantages:-

- Easily to clean & washable.
- Driver side eyelet lock gives protection against slipping of mat.
- Provide shield against spills & debris.
- Specially designed for Harrier.

Benefits:-

- Efficiently protect the car from dirt, mud.
- 2 Years of product warranty.

S.No	Part No.	Description	Applicability
1	885732003868	Floor Carpet Mat Black Harrier (Cabin +Trunk)	All Variant

❑ 3D Cabin Mat



3D Cabin Mat



3D Trunk Mat

Features:-

- Premium 3D mat which add comforts & style to your car.
- Perfect fit the floor with raised edge.
- Harrier branding enhance the product look.

Advantages:-

- Easily to clean & washable.
- Driver side eyelet lock gives protection against slipping of mat.
- Provide shield against spills & debris.
- Specially designed for Harrier.

Benefits:-

- Efficiently protect the car from dirt, mud, snow, water & oil.
- 2 Years of product warranty.

S.No	Part No.	Description	Applicability
1	885732003829	3D Mat Set (Cabin + Trunk Mat)	All Variant

July_25



7D Trunk Mat- Full coverage

Features:-

- Premium 7D Mat which add comforts style and full coverage to your car.
- Perfect fit with floor and covers every groove & curve.

Advantages:-

- Easily to clean & washable.
- Driver side eyelet lock gives protection against slipping of mat.
- Specially designed for Harrier.

Benefits:-

- Provide shield against spills & debris.
- 2 Years of product warranty.

S.No	Part No.	Description	Applicability
1	885732003864	Floor Mat 7D Cabin + trunk Mat	All Variant

July_25

❑ Mud Flap



Features:-

- Made up of High quality material .
- Provide protection against dirt.

Advantages:-

- Add elegance to your vehicle's exterior.
- Light weight & long lasting product.
- Perfectly fit & specially designed for Harrier.

Benefits:-

- Easily installation with screw & secure fit.
- Tested & reliable product.
- 2 Years of product warranty.

S.No	Part No.	Description	Applicability
1	885732003436	Mud Flaps	All Variant

July_25

❑ Scratch Guard



Screen Guard – Music System



[Scan for installation video](#)



Screen Guard – Music System



[Scan for installation video](#)



Screen Guard – Instrument Cluster



[Scan for installation video](#)



Screen Guard – Steering Wheel



[Scan for installation video](#)



Screen Guard – FATC Panel



[Scan for installation video](#)

Features:-

- Protects Screen from everyday wear & tear
- Keeps screen in factory finish quality protecting screen from damage and scratches

Advantages:-

- Transparent flexible film protects entire display providing maximum coverage
- Material is self healing and withstands daily surface abrasions and will remain mark free always

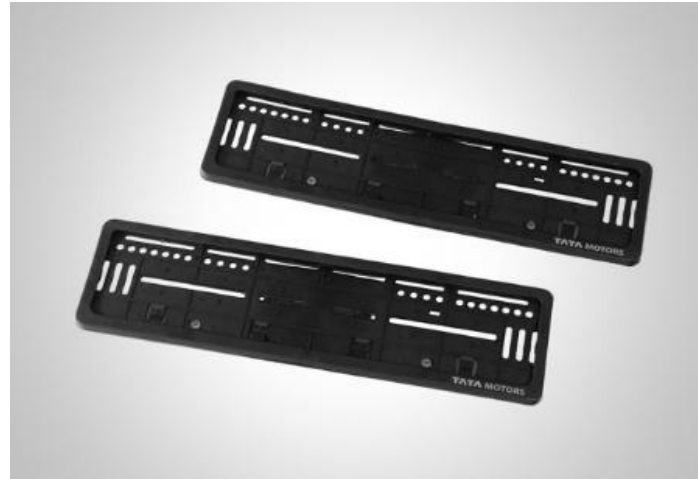
Benefits:-

- Transparent flexible film protects entire display providing maximum coverage
- Material is self healing and withstands daily surface abrasions and will remain mark free always

S.No	Part No.	Description	Applicability
1	885732003858	Screen Guard Music System 14.5 inch	Accomplished
2	885732003453	Screen Guard Music system 12.2 inch	Fearless
3	885732003449	Screen Guard Instrument cluster 9 inch	Adventure, Fearless, empowered
4	885732003446	Screen Guard Steering wheel	All Variant
5	885732003451	Screen Guard Touch Panel/FATC Harrier	All Variant

July_25

❑ Number Plate & Valve Caps



Number Plate



Valve Air Cap

Features:-

Number Plate-

- Number plate with classy look.
- Adhere the regulatory standards.
- Made of good molded plastic material.

Advantages:-

- Easily installation & secure fit .

Benefits:-

- Easy to fit.
- 2 Years of product warranty.

S.No	Part	Material Description	Applicability
1	885709101608	Number Plate Regular 2Pcs	All Variant
2	885732002957	Valve Air Cap (Set of 4)	All Variant

Common Products



Car Bin



Tissue Box

Features:-

Car Plastic Bin-

- Dispose Your Garbage Efficiently During Journey.
- Ideal Accessory to Store Small Items.

Tissue Box-

- Helps to Keep Your Car Neat & Clean.
- Comes with 50 Pulls.

S.No	Part	Material Description	Applicability
2	885732002797	Car bin plastic	All Variant
3	885709501691	TMGA Tissue Box 50 Pulls	All Variant

Car Charger



- **3 Ports:** Type C port (PD Type)- 2 | USB port (QC 3.0) – 1 | Three USB ports supports simultaneous fast charging for laptops (Type C Port), tablets, phones, etc
- **160W HIGH POWER:** Supports PD/QC4 + QC3.0/AFC/FCP/SCP/PPS fast charging protocols, Automatically identifies the device to be charged & distributes current intelligently. Fast & safe charging without damaging the battery
- Meets several safety standards - it's Smart Microchip is capable of multiple protection systems like over-current, over-voltage, over-temperature, short circuit & anti-electromagnetic interference protection
- Compatible with Laptops (Type C Port), Android Devices, iPhone, iPad, Macbook, iPad Pro, iPhone, iPhone X etc
- Certification: QUALCOMM LICENSE /CE/FCC /UL
- **100 W Type C to Type C super fast charging cable included in packaging**
- **Cable inside is not covered under Warranty**

OVERCHARGE Protection

Qualcomm 4/3.0 Quick Charge

PD protocol

160W TOTAL POWER

Smart Microchip

1 Year WARRANTY

100Watts

+

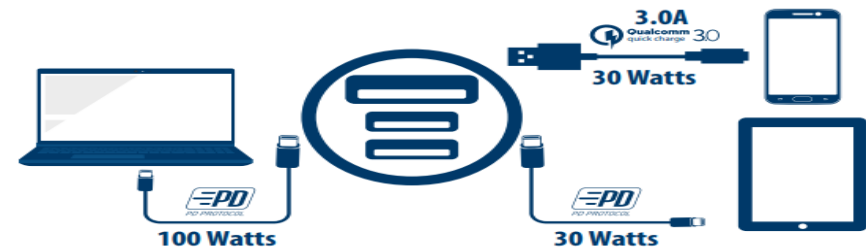
30Watts

+

QC 3.0 30Watts

=

160 Watts TOTAL POWER



S.No	Part No.	Description	Applicability
1	885732003591	Car Charger 160 Watt	All variant

July-25

❑ Car Charger Retractable Cable



Scan for Product Video

Features:-

- 120W 4 In 1 Super Fast Charge Car Phone Charger.
- Retractable Cables (31.5 Inch) And 2 USB Ports Car Adapter.

Advantages:-

- The charging plug can be adjusted up to 180 degrees left or right, easy to use.
- Suitable for 12V-24V

Benefits:-

- Easy to Access.
- 2 Years of product warranty.

S.No	Part No.	Description	Applicability
1	885732003604	Charger Retractable Cable 120 watt	All variant

July_25

Organizer For Music System



Scan for Installation Video

- Features:-**
- A dashboard organizer is a compact and practical accessory designed to keep essential items within easy reach while driving.
 - It provide application to store items like mobile phones, sunglasses, keys, pens, coins, documents, and other small essentials.
 - Two compartments for organizing essentials with anti Skid base provided inside the compartment.
- Advantages:-**
- Provides designated spaces for small items, reducing clutter on the dashboard and seats.
 - Prevents essential items from getting lost or misplaced.
 - Minimizes distractions by preventing the need to search for items while driving.
- Benefits:-**
- Made up of automotive grade material.
 - 2 Years of product warranty.

S.No	Part No.	Description	Applicability
1	885732003804	Organizer For Music System	Adventure S, Adv S+A, Fearless, Dark

July_25

Refrigerator



Features:-

- Experiencing your camping and outing with viable food & drinks .

Spec-

- ✓ Single zone, Built-in battery and USB interface, LED lights, reverse/ removable door and drain plug
- ✓ Temperature setting: +20°C to -22°C, DC 12V / DC 24V, available for cars
- ✓ Withstand a short-term inclination of 30°, easy fit for various outdoor situations
- ✓ Featured with 3-level low voltage protection function
- ✓ Temperature displayed and set on control panel with selected unit Celsius or Farenheit
- ✓ ECO Mode and High Speed Mode option on the panel

Advantages:-

- Protects your food and beverages for your camping ,parties ,outings.
- Easy to operate and can be use indoor or outdoor .

Benefits:-

- Easy to handle
- 2 Years of product warranty.

S.No	Part No.	Description	Applicability
1	885732003809	Refrigerator	All Variant

July_25

❑ Scissor Jack Wrench



Features:-

- 360° rotating scissor wrench.
- A safe & effort saving scissor jack handle.
- Scissor wrench head designed specially as per the Tata Cars. No additional screw adaptor required.
- Positive & reversal knob design : Allow to adjust the direction by pulling the knob.

Advantages:-

- Easy to use: put the handle into the jack & move the handle clockwise to push the jack at a proper height.
- To be used easily by men & women.

Benefits:-

- Applicable for all the Tata cars.
- Testing & reliable product.
- Compact & firm design with advantages of durability & rust resistance.
- 2 Years of product warranty.



Scan for Installation Video

S.No	Part No.	Description	Applicability
1	885732003774	Scissor Jack Wrench	Universal

❑ Flask



Features:-

- The travel flask bottle comes with a leak proof lid that will prevent any accidental spills.
- Vacuum insulated flask good to carry hot/cold water

Advantages:-

- 300 ml thermosteel flask keeps beverage hot & cold.
- Easy to carry on front door pocket of car.

Benefits:-

- Easy to carry & maintain.
- 2 Years of product warranty.

S.No	Part No.	Description	Applicability
1	885732003189	VACCUM BLACK FLASK 750ML	All variant

July_25

☐ Coffee Maker



Features:-

- Heating extraction - Water can be directly heated inside the machine. Even if we add normal temperature water, you can still drink a cup of perfect hot coffee..
- Pressure:15-20Bar
- Charging Time:4.5H

Advantages:-

- Apply to capsule/coffee powder Hot/Cold coffee
- Water shortage Protection
- Metal housing
- Tip-over switch

Benefits:-

- Easy to carry & maintain.
- 2 Years of product warranty.



Scan for Product Video

S.No	Part No.	Description	Applicability
1	885732003590	Coffee Maker	All variant

July_25

Power Station



Features:-

- This product serves as a DC to AC Portable Power Station with dual usb 9V-12.6V QC 3.0, PD Type –C 20 W , dual AC port 220V. Max power 300W The capacity of this Portable Power Station is 90Ah.
- Built-in cooling fan, full protection features keeps your appliances safe from overheating, overloading, short circuit, low voltage and over voltage.

Spec-

- ✓ Storage Capacity : 60 liters
- ✓ Input Charging Power : DC 12V (9V-12.6V)
- ✓ AC Inverter Output : 110V/60Hz~220V/50Hz (300W)
- ✓ DC Output : 9V-12.6V 10A
- ✓ QC3.0 Output : 4.8V-12V 3A
- ✓ Battery type : Li-Ion
- USB Output : 5V/2.1A
- PD Fast Charger Output : 25W
- Total Output Power : 300W
- Dimensions : 295 * 192 * 180 mm
- Working Temperature: 0°C ~ 40°C

Advantages:-

- Reliable Power Anywhere – 300W portable station with Li-ion battery, QC 3.0, PD, USB-C, AC/DC ports, LED torch, digital display.
- Fast & Versatile Charging – Supports multiple devices with 2 USB, USB-C, AC sockets, DC output, ensuring efficient, reliable power anytime, anywhere.

Benefits:-

- Durable & Travel-Friendly –
- 2 Years of product warranty.

S.No	Part No.	Description	Applicability
1	885732003810	Power Station	All Variant

July_25

Portable Washer



Features:-

- A compact & efficient cleaning solution , providing high pressure water flow to remove dirt , mud and grime from car making it ideal for home , road trips and outdoor adventures.

Spec- Water Output : 4L-8L / min

- Battery Capacity : 6000mAh
- Voltage : 7.4 V
- Power : 18W
- Material : ABS + PC

Advantages:-

- Portable & Lightweight – Easy to carry and store in your vehicle.
- Water-Efficient – Uses minimal water for maximum cleaning performance.

Benefits:-

- Easy to Operate – Simple setup and user-friendly operation.
- Digital Display - Comes with real time temperature & battery level display.
- 2 Years of product warranty.

S.No	Part No.	Description	Applicability
1	885732003801	Portable Washer	All Variant

July_25



Coat Hanger

Features:-

Coat Hanger-

- Carry Your Garments & Coat.
- Keeps Your Coat Looking Fresh & Wrinkle Free.

S.No	Part	Material Description	Applicability
1	885704283361	Coat Hanger	All Variant

Broad Category	Secondary Category	Primary Category	Part No.	Material Description	Applicability (Variant)
Infotainment	Infotainment	RSE	885732003601	Rear Seat Entertainment	All Variant
		Speaker Ring	885732003543	Speaker Rings (Set Of 4 pcs)	All Variant
		Speakers	885732003237	Speakers Coaxial	All Variant
		Speakers	885732003240	JBL Speakers A302HI	All Variant
		Speakers	885732003239	JBL Speakers 2624FHI	All Variant
		Speakers	885732003238	Speakers Coaxial 662	All Variant
		Speakers	885732003241	Speakers Triaxial	All Variant

❑ Rear Seat Entertainment

ANDROID TOUCHSCREEN Rear Seat Entertainment



New Feature
Android 9.0
2GB DDR4 | 16GB ROM
HD Screen – 1920 x 1080
Mira Cast for Phone Mirroring
HDMI Input

- Ultra - thin 10.6" Capacitive Touch Screen
- Android 9.0 OS
- Digital IPS screen, 64-bit true colour
- ARM Cortex-A55, 2.0 GHz, Octa-core
- 2GB RAM - DDR4 | 16GB ROM
- Screen Resolution: 1920 x 1080
- HDMI Input
- Mira Cast for Phone Mirroring
- USB 2.0/ Micro SD (Max 32 GB)
- Bluetooth for Headphone
- Built-in Speakers
- Built-in Wi-Fi Support 802.11 b/g/n
- Headphone out
- AV-in - 1
- Audio out – 1
- FM/IR Transmitter
- Power Supply: DC 12V



S.No	Part No.	Description	Applicability
1	885732003601	Rear Seat Entertainment	All Variant

July_25



Variant	Pure Coaxial 66.2	A302HI	STAGE 2 624 FHI	R675	Crosslink Coaxial
Part Code	885732003238	885732003240	885732003239	885732003241	885732003238
System	2-way Coaxial	2-way Coaxial	2-way Coaxial	3-Way Coaxial/Full Range	2-way Coaxial
Diameter	165mm / 6.6"	160mm / 6.5"	164mm / 6.5"	171.5mm / 6.75"	165mm / 6.6"
Rated Power	40 Watts RMS	45 Watts RMS	40 Watts RMS	40 Watts RMS	40 Watts RMS
Peak Power	280 Watts	300 Watts	400 Watts	80 Watts	280 Watts
Sensitivity 2.83 V/m	90 dB	91 dB	91 dB	89 dB	90 dB
Frequency Response	90 – 22,000 Hz	55 – 20,000 Hz	55 – 20,000 Hz	48 – 22,000 Hz	90 – 22,000 Hz
Impedance	4 ohms	4 ohms	4 ohms	4 ohms	4 ohms
Cone Material	Injected PP	PEI Balanced Dome Tweeters	PEI Balanced Dome Tweeters	Mica Injected Polypropylene	Injected PP
Installation Depth	40.4 mm / 1.6"	58.7 mm / 2-5/16"	56 mm / 2-1/4"	51.2 mm / 2"	40.4 mm / 1.6"

Features:-

- Crystal-clear high and powerful bass
- High-quality speakers produce crisper, clearer sound

S.No	Part	Material Description	Applicability
1	885732003238	Speakers coaxial 66.2	All Variant
2	885732003240	JBL Speakers A302HI	All Variant
3	885732003239	JBL Speakers 2624FHI	All Variant
4	885732003241	speakers Triaxial	All Variant
5	885732003237	Speakers Coaxial	All Variant

July_25

❑ V2L Charging Gun



Features:-

- The vehicle to load works by plugging the adapter directly into the charge socket . This then converts direct current to alternation current which enables you to charge other devices.
- It makes your vehicle into electricity hotspot.

Advantages:-

- It will enables customers to go for picnic & day camping with their favorite gadgets & utilities without running off charge.
- Maximum amount of power output is 3.3 kVA
- It will available though Accessories warehouse ordering route.

Benefits:-

- Easy to carry & maintain.
- 2 Years of product warranty.

S.No	Part	Material Description	Applicability
1	885732003495	V2L Gun MY24	All Variants

July_25

❑ V2V Charging Gun



Features:-

- It allows the sharing of charge from Harrier.ev to other compatible EV's.
- It means if vehicle needs a emergency top-up , it cab be charged from Harrier.ev vehicle.

Advantages:-

- It will enables customers to cop up with the emergency situation if the charging stations is not near by .
- Applicable for compatible sink models at a power output of 5.2 kVA
- It will available though Accessories warehouse ordering route.

Benefits:-

- Easy to carry & maintain.
- 2 Years of product warranty.

S.No	Part	Material Description	Applicability
1	885732003393	V2V Charging Gun	All Variants

July_25

Broad Category	Secondary Category	Primary Category	Part No.	Material Description	Applicability (Variant)
Safety	Electricals	Digital Video Recorder	885732003596	Digital Video Recorder Advanced	All Variant
		Digital Video Recorder	885732003644	Dash Cam Front & Rear	All Variant
		Digital Video Recorder	885732003536	Dash Cam 5.1	All Variant
		V2V	885732003496	V2V Gun	All Variant
		V2L	885732003495	V2L Gun	All Variant
		Inverter	885732003784	Car Inverter	All Variant
	Common Products	Air Purifier	885732003259	Air Purifier AP 1.1	All Variant
		MultiPurpose Tools	885732003135	Defend Me Tool	All Variant
		MultiPurpose Tools	885732003136	Resqme Tool	All Variant

❑ Dash Cam 5.1 – Basic Range

DASHCAM BP 5.1 WIFI



BP 5.1 WIFI

4K & 1080P | Front & Rear

Part No. 885732003536

**Digital Video Recorder
(Dashcam) for Car**



G-Sensor



Built-in WiFi



Mobile APP
(iOS & Android)



Voice Prompt



- Mini Bullet Dash Cam
- Ultra 4K Front Camera
- Full HD 1080P Rear Camera
- 170° Wide-View-Angle (diagonal)
- Built-in WiFi for Live View
- Mobile APP for iOS & Android
- Built-in Voice Prompt
- Supports Gravity Sensor
- Supports Car Number Display
- Built-in Microphone & Speaker
- Supports Time & Date Stamp (ON/OFF)
- Supports Rear Camera Mirror Function (ON/OFF)
- Smaller Video Size with H.264 Coding Format
- Storage Media **Ultra High Speed 3 Micro SD up to 256GB**
- Working Temperature: -20°C -70°C
- Dimension (WXHXD): 91x36x34mm
- Weight: 59g

S.No	Part No.	Description	Applicability
1	885732003536	BP 5.1 - Dash Cam	All Variant

July_25

❑ DVR – 3Way- Mid Range



DashCam 4k Video Recorder 3 WAY UNIVERSAL

FEATURES

WiFi	TF Micro SD Card	4K+1K+1K Wide-angle lens	2" Display Screen
Video Format	Loop Recording	Mic Built-in	Recording while charging
G-sensor	Speaker Built-in	Overvoltage Protection	



- | | |
|-----------------------------|----------------------------|
| 1. Power Button | 2. Down Selection |
| 3. Menu/Mode Button | 4. Up Selection |
| 5. Work/Charging indication | 6. Reset Button |
| 7. TF card slot | 8. Inner camera |
| 9. Front Camera | 10. Infrared light |
| 11. Rear pull interface | 12. Type C power Interface |
| 13. Display | |
| 15. MIC | |



Scan for Installation Video



Scan for Product Features Video



Scan for User Manual

Features:-

- 3 way seamless and continuous recording.
- Front camera, Inner cabin camera & reverse camera.
- G-sensor collision sensing lock function.
- 2 inch high-definition display screen.
- 4K+1K+1K high-definition wide-angle camera.

Advantages:-

- Video format : MP4
- Built-in microphone and speaker.
- Support for recording while charging.
- Support for high-capacity TF(micro SD) memory card upto 128GB.
- Support for Wi-Fi function, time-lapse recording function.
- Support for overvoltage protection function when car starts.

Benefits:-

- Easy installation with Plug in fit .
- 2 Years of product warranty.

S.No	Part No.	Description	Applicability
1	885732003644	DVR -3Way	All variant

July_25

❑ DVR – Advanced



Industry First Features: ALL IN ONE A.I. DASH CAMERA

- Advanced Driver Assistance System (ADAS LVL1) with Road safety alerts such as Lane Departure, Forward Collision Warning, Pedestrian Warning
- Driver Monitoring System (DMS) with A.I Pre-emptive accident preventions with warnings such Distracted Driving, Fatigue Driving, Talking on the phone while driving, Smoking while driving.
- LIVE GPS Tracking with Speed, Route takes, path, Distance covered, Replay, ODOmeter setup, Alerts & notification
- Live (Remote) video streaming of both front & inside camera via APP. Ability to perform TWO way Communication using the APP & the Dash camera. Record directly to Mobile phone and save Geo Tagged Images.

Introduction:-

Welcome to the next generation of driving safety an convenience with our TATA AI-Based 4G Dash Camera. Designed to enhance your driving experience, this device is equipped with advanced technology to ensure your safety, monitor driving habits, and provide seamless connectivity on the go.

Features:-

- 4G Enabled Dual Dash Camera with built in GPS
- A.I. Based Software completely Designed, Built & Managed in India with Data Protection & Qu resolution
- Camera: Dual Cameras (Front and Cabin) Front Camera 1080P with ADAS & Cabin Camera 720p with DMS and IR for Low Light Vision
- Connectivity: 4G LTE, Built-in GPS for Real Time Tracking
- Pre-empting Road Accidents with AI based DMS {Driver Monitoring System}, ADAS {Advanced Drive Assistance Systems} Level 1 with AI
- Built-in 'G' Sensor for emergency recording
- Supports upto 512GB SD card (Class 10)
- SOS Button for Emergency
- Prepaid SIM Pack: 3 Months from Activation (10GB 4G Data pack monthly) –Post 3 month you have to buy it. (More information check user manual)

Advantages:-

- Enhanced Safety: Proactive monitoring and real-time alerts help prevent accidents by notifying drivers of potential dangers like lane departure and forward collisions. This ensures safer driving habits an reduces the risk of accidents.
- Connectivity: Share your journey in real-time with loved ones through live streaming and location tracking. Stay connected without additional devices, enhancing your travel experience
- Comprehensive Monitoring: Track your vehicle's location and access detailed reports on stops, trips and daily summaries. Geofencing and real-time alerts keep you informed of your vehicle' movements.
- User-Friendly Application: Manage all dash camera features seamlessly through an intuitive Made India mobile APP. Easily access live streams, reports, and alerts with just a few taps.
- Data Security: All data is securely hosted and managed in India, ensuring privacy and quick query resolution. Your information is protected with the highest security stand.

Benefits:-

- Family & friends can track, view live, and talk to their kids in real time without mobile device use
- Travel Vlogging: Document journey for fans in real-time
- Late-Night Travel Safety: Share journey with family for peace of mind.
- 2 Years of product warranty.



Application Guide

July_25

S.No	Part No.	Description	Applicability
1	885732003596	Digital Video Recorder Advanced	All variant

For App Download



iOS



Android

User Manual



Installation Video



What is this Dash Camera? (Hardware)

- 1 ADAS (Advanced Driver Assistance Systems) Level 1 with AI
- 2 DMS (Driver Monitoring Systems)
- 3 2 Channel Camera (External Road view & Internal Cabin View)
- 4 Built-in Speaker & Microphone
- 5 Built-in 4G SIM Slot for Enabling Live Streaming
- 6 Built-in GPS for Real time tracking
- 7 Port for SOS expansion



Journey/Memories Feature

How it works?

Once you start the journey, the map page will open and create a route on the map in real time. You can name your journey and also upload pictures using your dash cam - internal & external camera sat various places that may catch your interest - Example, Beautiful waterfall near Kemptly! Must try the Parathas at this new Dhaba opened in Ambala!

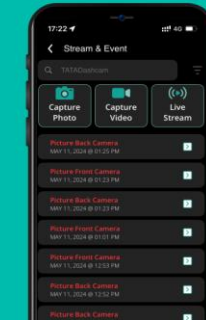
You can share your live journey with fellow riders so that you can track each other in real time.

You can also share a saved journey with friends and families so that they know what route you took and what all sights are worth looking out for!

The receiver do not need to have the application installed and can view from the web browser itself!

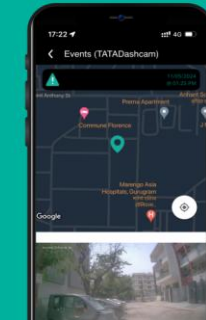
Live Stream Of All Cameras

The user can access the live video & audio feed of the vehicle interior cabin & the view of the road ahead, and can also hear conversations inside the vehicle. We also provide an option to record the ongoing video feed directly to your mobile phone by a single click of a button - this can then be shared via messenger apps and email.



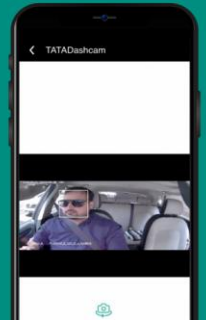
Capture Photo

The user can capture & save static images of all cameras in real time with the location where the vehicle is. This gets uploaded on the cloud server. They can be downloaded and shared via messaging apps.



Capture Videos

Similar to Photo capture - video clips of 10 seconds of all cameras can be captured remotely while using the APP. The same can be shared.



Industry First Features - Scene 1

Social connectivity like never seen before

Imagine if the grandparent can not only track the location of their kids but also in real time also talk to the entire family while watching them live through the camera. All this without the family in the car having to touch their mobile devices while driving!



Grandparents can view their kids



Industry First Features

Social connectivity like never seen before

Start Sharing Your Journey

Location is Mapped

Drop a Marker

View the whole Route

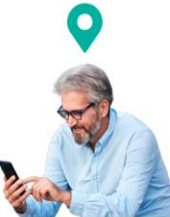
Scene 2

A travel vlogger documents his entire journey with the help of Tata.ev app for his fans so that they know exactly what to expect when they get out on the same trip!

Industry First Features - Scene 3

Social connectivity like never seen before

Due to workload, Neha leaves her office at 11:30 PM & is extremely worried to drive home alone at this hour. Sharing her limited time link to Tata.ev app, she calls her father to ensure if he can see her. She reaches safely & the link expires after set time.



Live Streaming Feature

Benefits

Remote live streaming features in a car dash camera offer several benefits:

- Real-Time Monitoring**: Users can monitor their vehicle remotely, providing peace of mind about its safety and security, especially in parking lots or unfamiliar locations.
- Emergency Response**: In case of accidents or emergencies, live streaming enables immediate assessment of situation, allowing for quicker response from emergency services, friends or family.
- Evidence Collection**: Live streaming provides a real-time evidence in the case of accidents, theft, or vandalism, facilitating insurance claims and legal proceedings.
- Lane Change**: The AI detects Lanes via the lane lines painted on the road and alerts driver of frequent lane changes via voice prompt.
- Forward Collision Warning**: The AI monitors the relative distance to the front vehicle and if the speed at which the current vehicle is travelling makes it a risk of colliding with the front vehicle an alarm is generated in the dash camera.
- Vehicle Tracking**: Allows users to track their vehicle's location in real-time, enhancing security and enabling efficient fleet management for businesses.
- Remote Assistance**: Users can remotely assist others in their vehicles, such as family members or employees, by providing guidance or support during their journey.
- Peace Of Mind**: It offers peace of mind to drivers & vehicle owners by providing constant access to their vehicle's surroundings and activities, even when they are not physically present.
- Pedestrian Collision Warning**: The front camera AI detects pedestrians and monitors their distance. If there's a risk of collision due to the vehicle's speed, a voice alarm alerts the driver via the dash camera.
- Too Close**: If a vehicle has stopped in front of the current vehicle & the current vehicle continues to not forward towards the stopped vehicle, a voice alarm is generated.

Advanced Driving Assistance Systems-LVL1

Usage & Benefits

Level 1 Built-in AI based ADAS system has the following functionality



Enhanced Safety | Accident Prevention | Improved Awareness

Setup & Activation

3 Month Free Trial

Please note this DVR comes with a **Free 3 month trial of a 4G Data SIM card and Mobile APP support.** To activate the SIM card kindly contact for activation: +91-8130863876 ; 9667227027 ; 8448560013

Mandatory Details For Activation

Device ID/IMEI number (printed on device)
SIM IMSI Number (3D Digit - Located on SIM card)
Vehicle's Registration Certification;
Vehicle Owners Photo ID Proof with Address proof;
Vehicle Owners Contact Number & Email ID.
WhatsApp to - +91-8130863876; 9999458588; 9667227027

Post 3 Months SIM & Support Plan

9 month Recharge: INR 2,250/- plus 18% Tax
12 Month Recharge: INR 2,750/- plus 18% Tax

How to Recharge

Call: +91-8130863876; 9999458588
Email: service@mosfettech.com; info@mosfettech.com
Timings: 9am till 9pm; 7 days a week

ADVANCED DVR SUPPORT & RECHARGE

Overall, remote live streaming capabilities in a car dash camera enhance safety, security, and peace of mind for vehicle owners and businesses alike.

❑ Car Inverter



Features:-

- Car Inverter with 200W offers DC to AC power.
- Dual 220V AC outlets,
- 2 Type A USB port : 18W (QC 3.0; 5V/3.6A)
- 2 Type C USB Port : 20W (PD 3.0; 20W x 2)
- 1 Cigarette lighter socket
- Output Frequency : 50Hz /60Hz
- Digital Display: show input voltage
- Indicator display
- Ac power switch
- Power Source : 12V cigarette lighter socket

Advantages:-

- Multiple devices can be charged.
- Applicable for Mobile, Laptop, iPad and other devices whose instantaneous power is less than 200w.

Benefits:-

- Built in smart temperature controller cooling fans to reduce heat & prevent shortage.
- Low voltage alarm, High voltage alarm, Overload protection
- Tested & reliable product.
- 2 Years of product warranty.

S.No	Part No.	Description	Applicability
1	885732003784	Car Inverter	All variants

July_25

❑ Air Purifier



- Indicator Display: PM2.5 Level, Filter Replacement Reminder, Auto/Manual Fan Speed
- Pre-packed with Blaupunkt AirPure Filter (APF1)
- Noise Level: <35dB
- Fan Type: Double inlet DC Turbo Fan
- HEPA Filter Grade: H11
- Ultraviolet Wavelength: 253.7nm
- Applicable for space: 3m²-5m²
- Input Voltage: 5V
- Current: 1A
- Power: <5W
- Accessories: USB Power Cable



Features:-

- Improves air quality, filter hazardous smoke.
- Remove harmful particles , odour & pollutants

Advantages:-

- improved air quality and reduced exposure to allergens and pollutants.
- Protection against air borne diseases.

Benefits:-

- Easy to placed in vehicle.
- 2 Years of product warranty.

S.No	Part	Material Description	Applicability
1	885732003259	Air Purifiers AP 1.1	All Variant

July_25



Defend me Tool

Features:-

- **Defend me-** 3 in 1 feature, Seat belt cutter, Glass breaker & Key chain
- **Resqme** - High pitch alarm to alert nearby people for assistance in emergency.

Advantages:-

- Precaution & safety to avoid accident.

Benefits:-

- Easy to carry .
- 2 Years of product warranty.

S.No	Part No.	Description	Applicability
1	885732003135	Defend me Tool	All Variant

July_25

Broad Category	Secondary Category	Primary Category	Part No.	Material Description	Applicability (Variant)
Car Care	Car Cover	Car Cover	885732003834	Car Cover Harrier.ev	All Variant
	Common Products	Air Freshner	885732003679	Organic Freshner	All Variant
		Air Freshener	885700002327	Car perfume Live Easy Jade Forest	All Variant
		Air Freshener	885700002330	Car perfume Live Easy	All Variant
		Air Freshener	885732002954	Gel Freshener	All Variant
		Air Freshener	885732002938	Odor X Eliminator	All Variant
		Car Washer	885732003589	Car Washer	All Variant
		Wireless Kit	885732003588	Wireless Kit	All Variant
		Vacuum Cleaner	885732003272	Vacuum Cleaner	All Variant
		Car Care	Car Care	885700002347	Extra Large Microfiber
	Car Care		885732002933	Car Shampoo	All Variant
	Car Care		885732002934	All Purpose Cleaner -Super Citrus	All Variant
	Car Care		885732002935	Super Glass Cleaner	All Variant
	Car Care		885732002936	Eraser Water Spot Remover	All Variant
	Car Care		885732002937	Ultraprotectent Multipurpose Dresser	All Variant
	Car Care		885732002938	Odor X Eliminator	All Variant
	Car Care		885732002939	Dry Wash	All Variant
	Car Care		885732002940	Express Wax	All Variant
	Car Care		885732003072	Ceramic Coating Kit-3D	All Variant
	Car Care		885732003251	Car Care Kit 3D	All Variant
	Car Care		885795101552	Microfibre Sponge	All Variant
	Car Care		885795101553	Platinum Duster	All Variant
	Car Care		885795101554	Microfibre- Extra Thick	All Variant
	Car Care		885795101555	Microfibre- Glass & Metal	All Variant
	Lifestyle	Key Cover	885732003190	Key Protection Cover	Adventure, Fearless
		Key Cover	885732003209	Silicone Key Cover Smart Key	Adventure, Fearless
		Key Cover	885732003327	Key Cover- Smart Key Black & Gold	Adventure, Fearless
		Umbrella	885732003605	Umbrella Tata.ev	All Variant

❑ Car Cover- Sustainable



Features:-

- Protect car body from dust, rain & scratches.
- High quality material to block UV rays & reflect heat .
- Sustainable material usage for ecofriendly environment .
- Charging separate cut for easy use .

Advantages:-

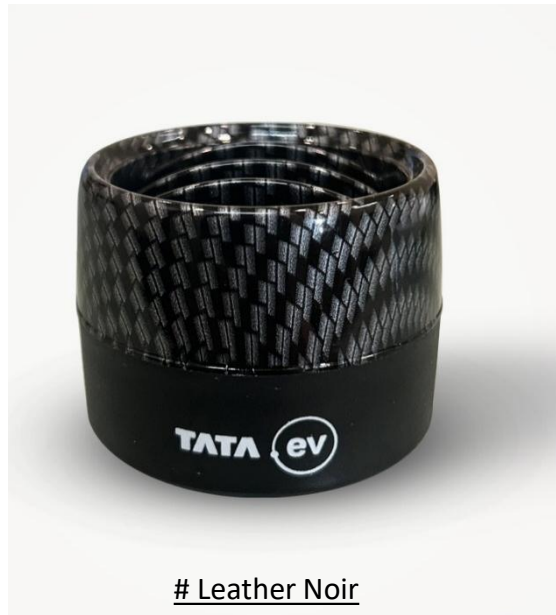
- Perfect fit to car body
- Water Resistance.
- Comes with mirror pocket & antenna.

Benefits:-

- Exclusive Car branding with elastic snaps & buckle for a tight fit
- 2 Years of product warranty.

S.No	Part No.	Description	Applicability
1	885732003834	Car Cover sustainable	All Variant

❑ Car Perfumes -Organic



Leather Noir



Moroccan Wood



White Linen

Features:-

- Specially formulated Organic car perfume.
- Long lasting car air fresheners.

Advantages:-

- Crafted to eliminate odors.
- leave your car interior smelling as good as new.

Benefits:-

- Fragrance avail as per the customer choice & demand.

S.No	Part	Material Description	Applicability
1	885732003679	Organic Freshener	All Variant

July_25

❑ Car Perfumes



Jade Forest



Live Easy



Ocean Fresh



Paper Freshener

Features:-

- Specially formulated Organic car perfume.
- Long lasting car air fresheners.

Advantages:-

- Crafted to eliminate odors.
- leave your car interior smelling as good as new.

Benefits:-

- Fragrance avail as per the customer choice & demand.

S.No	Part	Material Description	Applicability
1	885700002327	Car perfume Live Easy Jade Forest 90gm	All Variant
2	885700002330	Car perfume Live Easy 45gm cup shape	All Variant
3	885732002953	Gel Freshener - Premium (115 Grams) Seam	All Variant
4	885732002955	Paper Freshener - Premium	All Variant

July_25

❑ Car Washer



[Scan for Product Video](#)

Features:-

- Car Washer with air compressor high pressure water pump.
- 12V DC Electric Pressure Washer suitable for car washing & variety of cleaning needs.

Advantages:-

- Voltage Import :12V , Power : 80w Flow Rate : 4.5L/min , Discharge Pressure : 0.6Mpa

Benefits:-

- Protect it from damage and increase its value.
- Prevents with rust & corrosion & preserve paint .

S.No	Part No.	Description	Applicability
1	885732003589	Car Washer	All Variant

July_25

❑ Wireless Kit



Features:-

- A wireless car care kit is typically a set of tools designed to help you clean, maintain, or enhance your vehicle without the need for cords or cables.
- These kits are powered by rechargeable battery of 20000 mah.
- Kit Contains – Car Washer, Vacuum cleaner, Flashlight, Tire inflator pump, Mobile phone stents, Power bank.

Advantages:-

- Cordless power tools.
- Portable & rechargeable.
- One power bank for all the tools.
- Compact design and easy to store & carry.

Benefits:-

- Flexibility in use – applicable for indoor or outdoor use.
- User friendly – easy to use.
- 2 years of Product Warranty.



[Scan for User Manual](#)



[Scan for Product Video](#)

S.No	Part No.	Description	Applicability
1	885732003588	Wireless Kit	All

July_25

❑ Tyre Inflator & Puncture Kit



Tyre Inflator

Features:-

➤ Tyre Inflator:-

- Made with high quality material which enable it to pump up your car's tyres.
- 150 watt
- 100% Pure copper motor
- 3 meter long powered cord

Advantages:-

- Voltage Import :12V
- In case of long journey it protect your trip for unnecessary chaos.

Benefits:-

- User friendly – easy to use.
- 2 years of Product Warranty.

S.No	Part	Material Description	Applicability
1	885795101551	Typhoon Tyre inflator 150W	All Variant

❑ Car Cleaning Products



Vacuum Cleaner

- Rated Voltage – DC 12V
- Rated Power – 100W
- Power Suction – 4.5 KPA
- Max Current – 8A
- Cable length – 3 meters
- Accessories – Flexible Hose Pipe, Brush Suction Nozzle & Long Suction Nozzle - 1 each



3D Pure wax



Car Duster



Microfiber Sponge

Features:-

- Great for removing dust, wiping down surfaces without worry about scratches
- Car 3D Pure wax, leaves no greasy residue, protects surface from UV rays and prevents Fading.
- Made of durable material

S.No	Part	Material Description	Applicability
1	885732003272	Blaupunkt Vacuum Cleaner	All Variant
2	885700002347	Bergmann Gladiator Extra Large Microfiber	All Variant
4	885795101553	Car Care (Platinum Duster)	All Variant
5	885795101552	Car Care (Microfiber Sponge)	All Variant

Car Care- Cleaning Products



Glass Cleaner



Water Spot Remover



Dry Wash



Express Wax



Ultra protectant
Multipurpose Dresser



Odor X Eliminator



All Purpose Cleaner



Car Shampoo Pink

Features:-

- Great for car glass cleaning, washing, dry wash, odor eliminator
- Safe & Bio degradable material

S.No	Part	Material Description	Applicability
1	885732002935	Super Glass Cleaner	All Variant
2	885732002936	Eraser Water Spot Remover	All Variant
3	885732002939	Dry wash	All Variant
4	885732002940	Express Wax	All Variant
5	885732002937	Ultraprotectent Multipurpose dresser	All Variant
6	885732002938	Odor X Eliminator	All Variant
7	885732002934	All Purpose Cleaner -Super Citrus	All Variant
8	885732002933	Car Shampoo Pink	All Variant

July 25

❑ 3D Ceramic Coating Kit



Features:-

- Mirror like finish for car
- Gives protection from repel water, dirt & road grime
- Easy to apply solution for showroom worthy finish
- Durable gloss 99%
- Water based solution
- Eco-friendly

S.No	Part No.	Description	Applicability
1	885732003072	3D Ceramic Coating Kit	All Variant

□ Key Cover



Smart Key



Smart Key Protection Cover



Key Cover Silicone

Features:-

- High Quality material_ Premium Finish
- Light & Durable
- Smooth Finish and fits Snugly on the key
- Protects the key from dust & scratches

S.No	Part	Material Description	Applicability
1	885732003327	Key Cover-Smart Key TPU	Adventure ,Fearless
2	885732003190	Key Protection cover	Adventure ,Fearless
3	885732003209	Silicone Key Cover Smart Key	Adventure ,Fearless

Broad Category	Secondary Category	Primary Category	Part No.	Material Description	Applicability (Variant)
Lifestyle	Pet Care	Pet Sheet	885732003597	Pet Sheet	All Variant
		Pet Harness	885732003599	Pet seat belt	All Variant
		Pet Barrier	885732003803	Pet Barrier	All Variant
		Pet Bowl	885732003598	Pet Feed Bowl	All Variant
	Camping Product	Bicycle Carrier	885732003595	Bicycle Carrier	All Variant
		Tent	885732003806	Camping Tent Pop up	All Variant
		Inflatable Bed	885732003800	Inflatable Bed	All Variant
		Chair	885732003807	Camping Chair foldable	All Variant
		Inflatable Sofa	885732003808	Inflatable Sofa single seater	All Variant
		Foldable Seat with storage	885732003799	Foldable Seat with storage	All Variant
		Tire Table	885732003802	Tire Table foldable	All Variant
	Common Products	Umbrella	885732003605	Umbrella Tata.ev	All Variant
		Mobile Holder	885709501688	Mobile Holder Automatic	All Variant
		Decorative Idol	885732003669	IDOL- Metal Hanging Tirupati	All Variant
		Decorative Idol	885732003670	IDOL- Metal Hanging Shiv	All Variant
		Decorative Idol	885732003671	IDOL- Metal Hanging Jesus	All Variant
		Decorative Idol	885732003672	IDOL- Metal Hanging Makka	All Variant
		Decorative Idol	885732003673	IDOL- Metal Hanging Hanuman	All Variant
		Decorative Idol	885732003675	IDOL- Metal Hanging Ik Onkar	All Variant
		Decorative Idol	885732003676	IDOL- Metal Hanging Durga	All Variant
		Decorative Idol	885732003677	IDOL- Metal Hanging Sai Baba	All Variant
		Decorative Idol	885732003678	IDOL- Metal Hanging Khanda	All Variant
		Decorative Idol	885709601658	IDOL - Mother Marry	All Variant
		Decorative Idol	885732002956	IDOL - Hanging Ganesh Gold Plated	All Variant
		Decorative Idol	885732003141	IDOL - Ceramic Ganesh With Resin Coating	All Variant
		Decorative Idol	885732003177	IDOL - Ganesh Ceramic	All Variant
		Decorative Idol	885732003424	IDOL - Red and Gold Plated Ganেশa	All Variant
	Decorative Idol	885732003510	IDOL - Hanuman	All Variant	
	Decorative Idol	885732003511	IDOL - Guru Nanak Sahibji	All Variant	
	Decorative Idol	885732003512	IDOL - Jesus Christ	All Variant	
Decorative Idol	885732003513	IDOL - Ram Lalla	All Variant		

❑ Car Pet Accessories



Pet Sheet



Scan for Installation Video



Pet Car Seat Belt



Pet Bowl

Features:-

➤ **Pet Sheet**

- Protect your seat to get scratched & dirty from pets.
- Car Pet seat cover is designed with 2 additional side folds.
- Easy to clean, tough and exceptional scratch-proof, 100% waterproof.
- Openable side cover to seat a person with pet.

➤ **Pet Car Sheet Belt**

- To use with seat belt leash.
- Pet is safely restrained to the seat.

➤ **Pet Feed Bowl**

- Feed food item on the bowl to your pet.

S.No	Part No.	Description	Applicability
1	885732003597	Pet Sheet	All Variant
2	885732003599	Pet Car Sheet Belt	All Variant
3	885732003598	Pet Feed Bowl	All Variant

July_25

Pet Barrier



[Scan for Installation Video](#)

Features:-

- A pet barrier for car is a protective accessory designed to create a secure separation between the rear area and the front passenger area .
- This barrier helps prevents pets from interfering with the driver and reduces the risk of distraction or injury in the event of sudden braking or an accident .

Advantages:-

- Easy to install , remove and store when not in use .
- Universal Fit .
- Adjustable straps that fits on head rest and installed at specified area .

Benefits:-

- The mesh design allow for clear rearview mirror visibility and helps pets calm by seeing their owners
- 2 Years of product warranty.

S.No	Part No.	Description	Applicability
1	885732003803	Pet Barrier	All Variant

July_25

❑ Bicycle Carrier



Features:-

- Rear mount bicycle carrier for car.
- The easiest and most secure way to load your bikes and keep them in place, preventing any abrasions or damage to the bicycle.
- Easily to carry 3 bicycle at once.
- Easy to install & remove.

S.No	Part No.	Description	Applicability
1	885732003595	Bicycle Carrier	All Variant

Pop Up Tent



Features:-

- Designed for families seeking comfort, professionalism, and value, this high-end camping series redefines luxury camping.
- Make your camping trips more enjoyable , comfy for any perfect outdoor adventure use.
- Easy to Pop up & install in case of any outing , camping and picnic.

Spec –

- ✓ Size:- 240x210x135cm
- ✓ Fabric:- 210T polyester with silver coating
- ✓ Bottom:- 150D Oxford + PU
- ✓ **Advantages:-**
- Each piece in the series is crafted for relaxation and premium quality .
- Easy to install & repack .

Benefits:-

- Easy to fold and carry in boot.
- 2 Years of product warranty.

S.No	Part No.	Description	Applicability
1	885732003806	Pop up Tent	All Variant

July_25

Inflatable Bed



Features:-

- A convenient and portable sleeping solution designed for road trips , camping and long journeys, inflates quickly to provide a comfortable and supportive surface in car’s back seat/ trunk ensuring restful sleep.
- Make your camping trips more enjoyable with this double protected, air tight, and light weight inflatable sleeping mat . Perfect for in-house and outdoor adventure use.

Spec –

- Size:- Dimension (Fully Expanded) : 174 x 126 cm
- Included Accessories : Air pump , 3 way air nozzle , 2 Headrest & Repair kit.
- Material : High-quality PVC with a soft flocked top layer
- Quick-release valve for fast deflation.

Advantages:-

- Durable & Waterproof – Made from high-quality PVC with a soft flocked surface.
- Portable & Lightweight – Folds into a compact size for easy storage.

Benefits:-

- Quick Inflation & Deflation – Easy setup with an electric or manual pump.
- Anti-Slip & Stable Base – Designed to prevent movement while sleeping.
- 2 Years of product warranty.

S.No	Part No.	Description	Applicability
1	885732003800	Inflatable Bed	All Variant

July_25

Foldable Chair



Features:-

- Designed for families seeking comfort, professionalism, and value, this high-end camping series redefines luxury camping.
- Make your camping trips more enjoyable , comfy for any perfect outdoor adventure use.
- Easy to install in case of any outing , camping and picnic.
- **Spec -**
- ✓ Seat Material: 600D Oxford Nylon
- ✓ Frame: 100% Stainless Steel Q195
- ✓ Colour:- Grey & black
- ✓ Weight Capacity :- 120 kg

Advantages:-

- Ergonomics padded Backrest for comfort, Convenient mesh cup holder, Non-slip foot cover, Anti-tear fabric.
- Sturdy and very comfortable camping chair.
- Comes with a Cover to carry

Benefits:-

- Easy to fold and carry in boot.
- 2 Years of product warranty.

S.No	Part No.	Description	Applicability
1	885732003807	Foldable Chair	All Variant

July_25

Inflatable Sofa



Features:-

- Designed for families seeking comfort, professionalism, and value, this high-end sofa set series redefines luxury camping.
- Inflate in case of any outing , camping and picnic.
- Giving luxury and soft comply experience in outdoor & indoor.

Spec –

- ✓ Open/Package Size: 108x78x70cm / 30x18x32cm,
- ✓ Top / Bottom Fabric: 100% Polyester 300D Oxford PVC coating
- ✓ Weight: 4.4KG / 9.7lbs

Advantages:-

- Each piece in the series is crafted for relaxation and premium quality .
- Easy to inflate and & repack .

Benefits:-

- Easy to fold and carry less space in car boot.
- 2 Years of product warranty.

S.No	Part No.	Description	Applicability
1	885732003808	Inflatable Sofa	All Variant

July_25

Foldable Seat Trunk Organizer



Scan for Installation Video

Features:-

- Specially designed for chair cum storage for camping & general purpose.
- Foldable Seat Trunk Organizer is a versatile and foldable accessory designed for seating and storage , providing a convenient solution for outdoor activities , camping , picnics & Road Trips.

Spec-

- ✓ Storage Capacity : 60 liters
- ✓ Material : High-strength ABS
- ✓ Dimensions (Open) : 59*36*33 cm
- ✓ Dimensions (Folded) : 14 cm

Advantages:-

- 2-in-1 Functionality – Serves as both a chair and a storage unit.
- Foldable & Compact – Easily folds for convenient trunk storage

Benefits:-

- Spacious Storage – Allows you to store essential items while traveling.
- Ergonomic Design – Comfortable seating with a stable base.

© Copyright, Confidential, Tata Motors Limited

S.No	Part No.	Description	Applicability
1	885732003799	Foldable Seat Trunk Organizer	All Variant

July_25

Tire Able



Scan for Installation Video

Features:-

- A metallic tire table for cars is a portable table that attaches to a vehicle’s tire, providing a flat and convenient surface for outdoor activities such as camping or roadside picnics.
- This table is made from durable steel materials and are designed to hook onto the tire securely without requiring extra tools.
- They provide a stable platform for holding food, drinks, tools, or other essentials, making them a favorite among outdoor enthusiasts.

Advantages:-

- Lightweight and easy to store when not in use.
- Folds flat and takes up minimal space, making it ideal for travel and outdoor use.
- Can be set up in seconds, providing instant utility during camping, road trips, or tailgating events

Benefits:-

- Adjustable for different tire widths , Portable ,Ideal for camping and off-road setups
- 2 Years of product warranty.

S.No	Part No.	Description	Applicability
1	885732003802	Tire Able	All Variant

July_25

☐ Mobile Holders



Mobile Holder Bergmann



Mobile Holder Wireless

Features:-

- Hold Your Smartphone While Driving.
- Keep Your Phone Charged.
- Adjustable & 360 Degree Rotatable Ball Joint

Advantages:-

- Make Calls, Navigate Without Compromising Safety.
- Foldable & Compact – Easily folds for convenient trunk storage

Benefits:-

- Safe while driving .
- 2 Years of product warranty.

S.No	Part	Material Description	Applicability
1	885709501688	Mobile Holder Bergmann automatic	All Variant
2	885773201528	Car Wireless Charger Suction Cup&AC vent	All Variant

July_25

□ Idols – Metal Hanging



Idol # Tirupati



Idol # Shiv



Idol # Jesus



Idol # Makka Madina



Idol # Hanuman



Idol # Guru Nanak Dev



Idol # Omkar



Idol # Durga



Idol # Sai Baba



Idol # Khanda

S.No	Part No.	Description	Applicability
1	885732003669	IDOL- Metal Hanging Tirupati	All Variant
2	885732003670	IDOL- Metal Hanging Shiv	All Variant
3	885732003671	IDOL- Metal Hanging Jesus	All Variant
4	885732003672	IDOL- Metal Hanging Makka	All Variant
5	885732003673	IDOL- Metal Hanging Hanuman	All Variant
6	885732003674	IDOL- Metal Hanging Guru Nanak Dev	All Variant
7	885732003675	IDOL- Metal Hanging Ik Onkar	All Variant
8	885732003676	IDOL- Metal Hanging Durga	All Variant
9	885732003677	IDOL- Metal Hanging Sai Baba	All Variant
10	885732003678	IDOL- Metal Hanging Khanda	All Variant

Features:-

- Metal hanging Idols for your car.
- High quality solid resin.
- Good quality acrylic frame.
- Very premium finish and quality.

July 25



Idol # Red & Gold Plated Ganesh



Idol # Ceramic Resin Coating Ganesh



Idol # Guru Nanak Ji



Idol # Hanuman



Idol # Ram



Idol # Jesus



Idol # Mother Marry

S.No	Part No.	Description	Applicability
1	885732003424	Red and Gold-plated Ganesh Idol	All Variant
2	885732003141	Ceramic Ganesh Idol with Resin Coating	All Variant
3	885732003511	God Idol Guru Nanak Sahibji	All Variant
4	885732003510	God Idol Hanuman	All Variant
5	885732003513	God Idol Ram Lalla	All Variant
6	885732003512	God Idol Jesus Christ	All Variant
7	885709601658	IDOL - Mother Marry	All Variant

Features:-

- Idols best for car dashboard
- High quality solid resin
- Good quality acrylic frame
- Very premium finish and quality

THANKS